

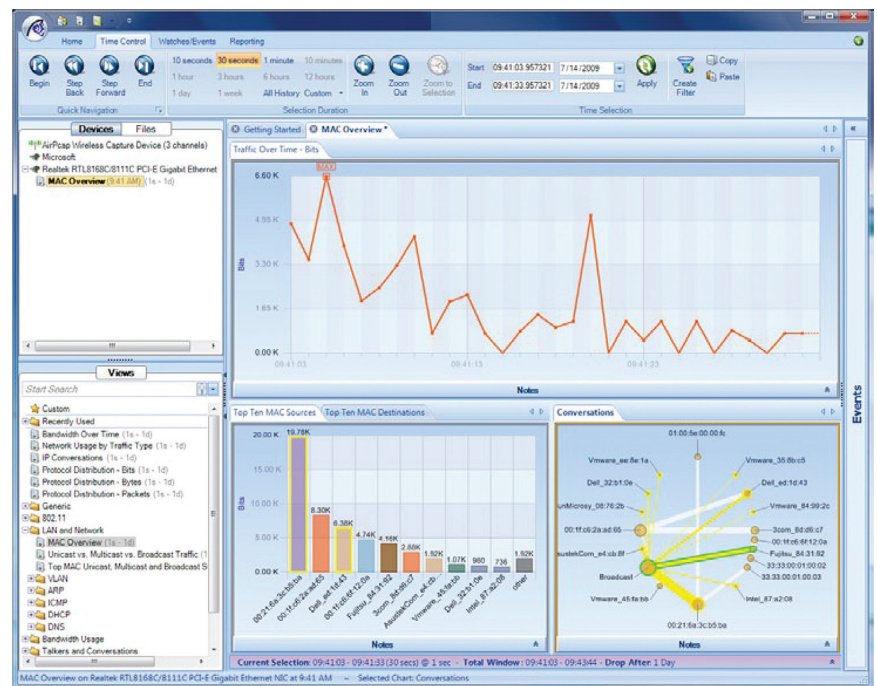
# STEELCENTRAL PACKET ANALYZER PERSONAL EDITION

## NETWORK ANALYSIS, MONITORING, VISUALIZATION, AND REPORTING

### OVERVIEW

Riverbed® SteelCentral™ Packet Analyzer Personal Edition is a visually rich and powerful analyzer for wired and wireless networks that revolutionizes the use of Wireshark® by providing capabilities not found in the world's most popular packet and network analysis tool. Fully integrated with Wireshark, SteelCentral Packet Analyzer Personal Edition capitalizes on users' existing expertise while dramatically increasing efficiency in identifying and diagnosing network problems.

Some network and application problems can only be resolved by capturing network traffic and analyzing it in depth. SteelCentral™ Packet Analyzer makes this easy by helping you find the packets you're looking for, visualize the data and create professional reports. It is suitable for individual users who would like to go beyond Wireshark, but do not need the enterprise features nor the distributed packet capture capabilities of the full SteelCentral Packet Analyzer product.



SteelCentral Packet Analyzer Personal Edition's Interactive and Visually Oriented User Interface

## TAKING WIRESHARK INTO UNCHARTED WATERS

With SteelCentral Packet Analyzer Personal Edition, you can:

- Quickly open and analyze multi-gigabyte trace files
- Easily isolate and identify traffic of interest through an extensive collection of network analysis metrics called “Views”
- Visualize long-duration live and off-line traffic statistics by moving back in time through large datasets with just a few mouse clicks
- Baseline and monitor long-duration network traffic with a flexible trigger-alerting mechanism called “Watches”
- Create professional reports directly from the user’s customized Views
- Take advantage of Wireshark’s capture and display filters and prodigious dissector library for deep packet analysis from within SteelCentral Packet Analyzer Personal Edition

“It was taking us hours and hours to capture, decode and get to bottom line information for particular customers. With SteelCentral, we’re now able to do it in less than 20 minutes.”

**Avi Lonstein, CEO**  
Airespring

### SteelCentral Packet Analyzer Personal Edition Features

#### Wireshark Within

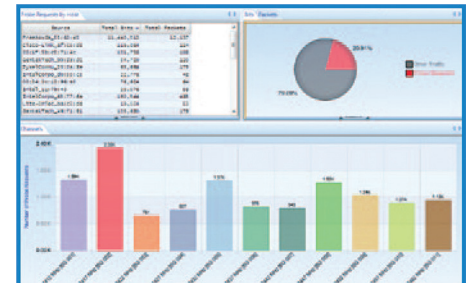
SteelCentral Packet Analyzer Personal Edition and SteelCentral Packet Analyzer are the only analysis tools to offer full integration with Wireshark. Use Wireshark on very large trace files by isolating interesting portions of the trace file using the Adaptive Analysis Engine. The Wireshark capture and display filters are available within SteelCentral Packet Analyzer Personal Edition as well as Wireshark’s prodigious dissector library for deep packet analysis.

Works with  
**WIRESHARK**

### Views: Flexible Analysis and Visualization Paradigm

SteelCentral Packet Analyzer Personal Edition offers a broad selection of interactive View metrics to meet the user’s troubleshooting requirements. These include:

- 802.11 WLAN troubleshooting (Discovery, Bandwidth, Channel Usage, Retransmissions, Signal and Noise)
- LAN and network troubleshooting (MAC, VLAN, ARP, ICMP, DHCP, and DNS)
- Bandwidth usage (including MicroBursts, IP, TCP, Web, and VoIP)
- Talkers and conversations (IP, subnets, countries, TCP, Web, and VoIP)
- Performance and errors (IP, TCP, Web, VoIP)
- User activity (Web, VoIP)



### Charts: Dynamic Visualization Components

SteelCentral Packet Analyzer Personal Edition includes a complete collection of interactive Charts including bar, pie, and strip charts, conversation rings, scatter diagrams, and grids. Intuitive point-and-click process for selecting elements within a Chart, such as bars within a bar chart or time intervals within a strip chart.

### Drill-Down: Innovative In-Depth Analysis

Drill-down is one of the most powerful and unique features in SteelCentral Packet Analyzer Personal Edition. Drill-down occurs when the user applies a View to a source which itself is the result of a selection made within a previously-instantiated View. This powerful paradigm increases the user's analysis capabilities many-fold. Very large trace files can be analyzed using the drill-down feature to quickly find and isolate anomalous network behavior.

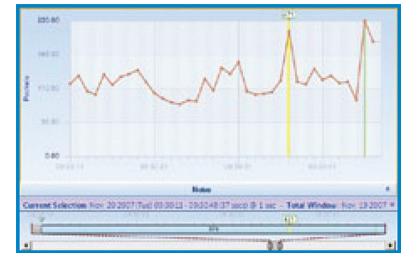


### Time Control: Flexible, Long-term Trending, Monitoring and Forensics

Viewing network traffic metrics computed over days, weeks, and months can be challenging. With SteelCentral Packet Analyzer Personal Edition's "back-in-time" capability, you can easily move through View metrics over extended periods of time with just a few mouse clicks. Based on the selected time interval, sub-sampling and data aggregation techniques are used to optimize the granularity of the visualpresentation of View metrics. The back-in-time capability can be applied to live and off-line traffic metrics.

### Watches: Advanced Trigger-Alerting Mechanism

SteelCentral Packet Analyzer Personal Edition includes a sophisticated triggering and alerting technology called "Watches." Create a Watch (trigger plus action) on virtually any View metric and be alerted based on a trigger condition computed on the metric. For example, you can be alerted on high bandwidth, slow server response time, high TCP round-trip time, and so on. When a Watch detects that a trigger condition has been met, an action will be executed. Actions include event logging, sending email, and starting a packet capture.



### Superior Reporting

SteelCentral Packet Analyzer Personal Edition offers an enhanced set of reporting capabilities that integrate fully with SteelCentral Packet Analyzer Personal Edition Views, enabling you to create professional reports from what you see on the screen. SteelCentral Packet Analyzer Personal Edition reports can be created in a variety of formats including PDF, Word and Excel.

"I would like to start by just saying "WOW." Finally a solid product for network professionals to do their job... As a Network Analyst, it is important to have tools that are reliable, manageable and adaptable to the ever-changing environments of high performance networks. Packet Analyzer is that tool. "

— Michael G. Hughes

Network Analyst, Global Escalations|  
IBM Information Management Software

### Unparalleled Wireless Support with Riverbed AirPcap

SteelCentral Packet Analyzer Personal Edition offers unparalleled functionality and versatility when applied to wireless networks through a comprehensive set of 802.11 Views that can be applied directly to 802.11 wireless sources. Thanks to the integration with Riverbed AirPcap adapters, SteelCentral Packet Analyzer Personal Edition is the only product in the industry to offer full multichannel packet capture from a laptop-based system. With AirPcap Nx, SteelCentral Packet Analyzer Personal Edition can speed up the decryption of WPA and WPA2 (pre-shared key) 802.11 frames as well.



## RELATED SOLUTIONS

### System Requirements

Windows XP, Windows Vista, or Windows 7 (32 bit/64 bit, Home, Premium, Enterprise, Professional, Ultimate)

Suggested Hardware Platform:

- A dual-core 2.0 GHz CPU or better
- 2 GB RAM
- 300MB free disk space plus additional space for trace files and reports
- Support for graphics cards with a minimum resolution of 1024 x 768

### Want to learn more about SteelCentral Packet Analyzer Personal Edition?

Contact Riverbed, the IT performance company, for more information on the products and solutions that are right for you. Thousands of companies world-wide trust Riverbed to achieve cost savings and deliver strategic advantage over the competition. Visit [www.riverbed.com](http://www.riverbed.com) for more information.

## ABOUT RIVERBED

Riverbed delivers performance for the globally connected enterprise. With Riverbed, enterprises can successfully and intelligently implement strategic initiatives such as virtualization, consolidation, cloud computing, and disaster recovery without fear of compromising performance. By giving enterprises the platform they need to understand, optimize and consolidate their IT, Riverbed helps enterprises to build a fast, fluid and dynamic IT architecture that aligns with the business needs of the organization. Additional information about Riverbed (NASDAQ: RVBD) is available at [www.riverbed.com](http://www.riverbed.com).

#### Riverbed Technology

199 Fremont Street  
San Francisco, CA 94105  
Tel: +1 415 247 8800  
Fax: +1 415 247 8801  
[www.riverbed.com](http://www.riverbed.com)

#### Riverbed Technology Pte. Ltd.

391A Orchard Road #22-06/10  
Ngee Ann City Tower A  
Singapore 238873  
Tel: +65 6508-7400

#### Riverbed Technology Ltd.

Farley Hall, London Road  
Binfield  
Bracknell  
Berks RG42 4EU  
Tel: +44 (0) 1344 401900

#### Riverbed Technology K.K.

Shiba-Koen Plaza Building 9F  
3-6-9, Shiba, Minato-ku  
Tokyo, Japan 105-0014  
Tel: +81 3 5419 1990

